

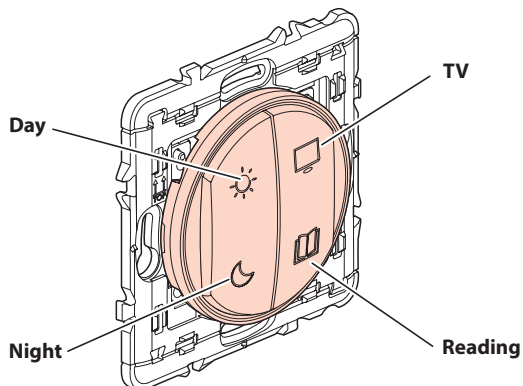
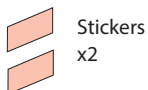
4-scene control day, night, TV, reading

0 677 68L/87L - 5 742 88/94

5 743 23 - 5 748 37

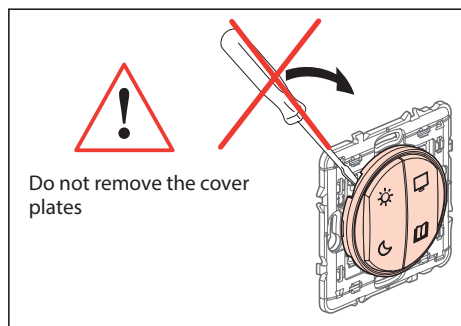
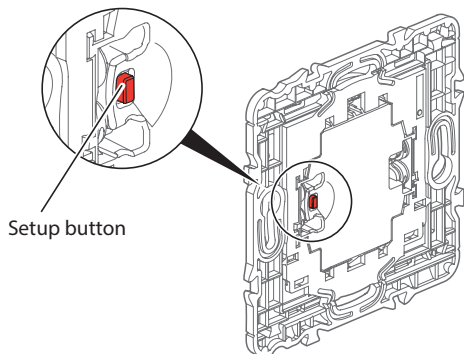


4-scene control day,
night, TV, reading



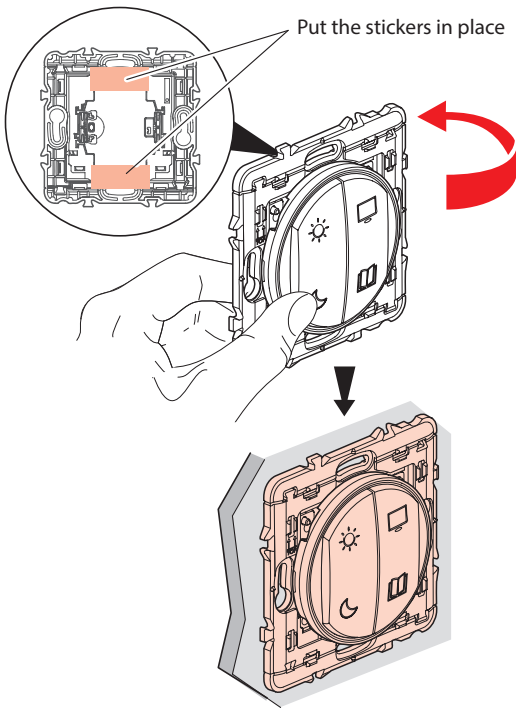
Frequency bands: 2.4 - 2.4835 GHz

Power level: < 20 mW

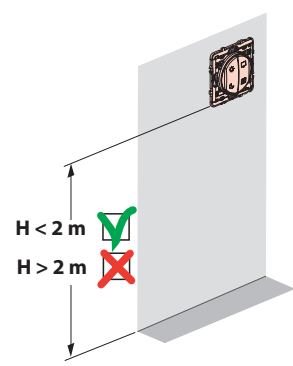


For pairing and programming of this product, please refer to the Hotel guide, available from:

www.legrandoc.com/048900



! Before fixing the wireless switch(es) with the removable stickers provided, test one on a non-visible area of the wall.



You can also fix the wireless switch(es) permanently to the wall with screws.

green power
certified by zigbee alliance
Model: ZLGP15

The undersigned, Legrand declares that the radio-electric equipment type (0 677 68L/87L - 5 742 88/94 - 5 743 23 - 5 748 37) complies with directive 2014/53/EU. The full text of the EU declaration of conformity is available on the following website: www.legrandoc.com

FC FCC ID: 2ACN8-ZLGP1X IC: 12132A-ZLGP1X Model : ZLGP15

This device contains licence-exempt transmitter(s)/receiver(s) that comply with FCC RF and Innovation, Science and Economic Development Canada's licence-exempt RSS(s). Operation is subject to the following two conditions: (1) this device may not cause interference, and (2) This device must accept any interference, including interference that may cause undesired operation of the device.

This device complies with FCC and ISED radiation exposure limits set forth for general population. This device must not be co-located or operating in conjunction with any other antenna or transmitter.

FCC Caution: the user that changes or modifications not expressly approved by the party responsible for compliance could void the user's authority to operate the equipment.

FCC NOTE: This equipment has been tested and found to comply with the limits for a Class B digital device, pursuant to part 15 of the FCC Rules. These limits are designed to provide reasonable protection against harmful interference in a residential installation. This equipment generates, uses and can radiate radio frequency energy and, if not installed and used in accordance with the instruction, may cause harmful interference to radio communications. However, there is no guarantee that interference will not occur in a particular installation. If this equipment does cause harmful interference to radio or television reception which can be determined by turning the equipment off and on, the user is encouraged to try to correct interference by one or more of the following measures:

- Reorient or relocate the receiving antenna.
- Increase the separation between the equipment and receiver.
- Connect the equipment into an outlet on circuit different from that to which the receiver is connected.
- Consult the dealer or an experienced radio/TV technician for help.

! **Safety instructions** GB (IE)

Make sure the power supply is disconnected before any intervention.
Strictly comply with instructions for installation and use.